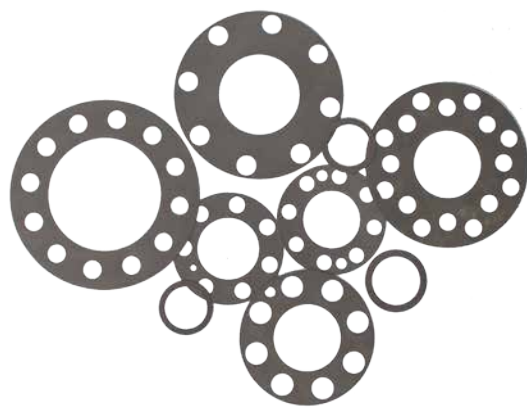


DIAMOND CLAW[®]

SURFACE LOCK



Stop destroying good parts.

Properly applied Diamond Claw[®] Surface Locks prevent the types of damage shown.



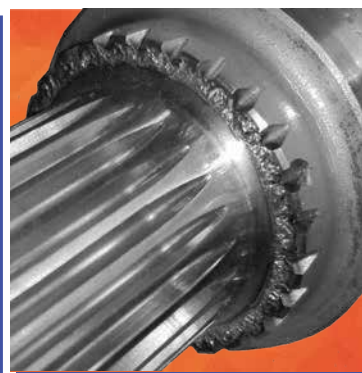
IH DT 466
Diamond Claw Pt# D19001



Big Block Ford
Diamond Claw Pt# D20020



Small Block Chevy
Diamond Claw Pt# D20021



Splined Post Mopar
Diamond Claw Pt# D19003

High compression and boosted engines generate considerable harmonic activity within the crankshaft assembly which can stress a damper fit or flywheel interface beyond its' clamping capability. Damage occurs the instant clamping force is exceeded.

**Diamond Claws are available for a wide variety of domestic and foreign applications.
Custom orders can be produced in house to your specifications.**



Kalitta Racing, NHRA Top Fuel | Flange Diamond Claw Pt# D18003
Damper Diamond Claw Pt# D19003 | Super Charger Diamond Claw Pt# D19019

WWW.SHAFTECH.COM 419.423.1000



DIAMOND CLAW®

SURFACE LOCK



High Tech Redneck, NTPA Super Stock Diesel
 Flange Diamond Claw Pt# D19001
 Damper Diamond Claw Pt# D19011

Diamond Claw® Surface Locks will eliminate fretting (surface welding) that often destroys mating faces of expensive crankshaft flanges, flywheel faces, blower drive hubs and dampers.

Eliminate Surface Welding

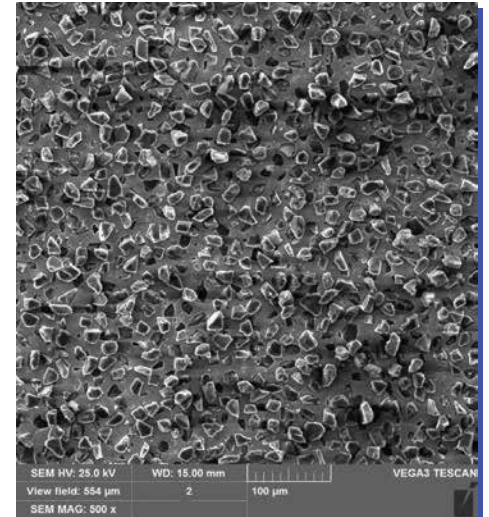


Diamond Claw® surface locks have successfully eliminated fretting (surface welding) in every application where Shaftech customers have installed them. Thousands of dollars in component cost and lost time savings have been realized.

With an installed thickness of .008 inch, a Diamond Claw® will not affect driveline installation. Diamond Claw® locks consist of precisely sized CBN (diamond) particles that are plated onto proprietary fatigue resistant steel. Diamond Claws® are available for many domestic and foreign applications. Custom orders are welcome.

Diamond Plating

This photo taken at 500X magnification illustrates homogeneity of particles within the plating matrix. This uniformity of both diamond particle spacing and overall thickness insures complete contact across the entire Diamond Claw® surface. Diamonds with an exceptional hardness of 10,000 Vickers are held within a plating matrix of 950 Vickers. This combination of extreme hardness and toughness allow Diamond Claws® to penetrate surfaces hardened to HRC 65.



Longevity

Diamond Claw® plating is inert and will not degrade if contaminated by oils, solvents or caustic cleaners. A properly installed Diamond Claw® will have a **near infinite life** in a single installation. Diamond Claws® can be reinstalled multiple times when used in applications requiring frequent rebuild. The microscale interlocking surface of each Diamond Claw® is highly durable.



Nissan GT-R, R35 built by TopSpeed Motorsports
 Flange Diamond Claw Pt# D19004, Damper Diamond Claw Pt# D190014

